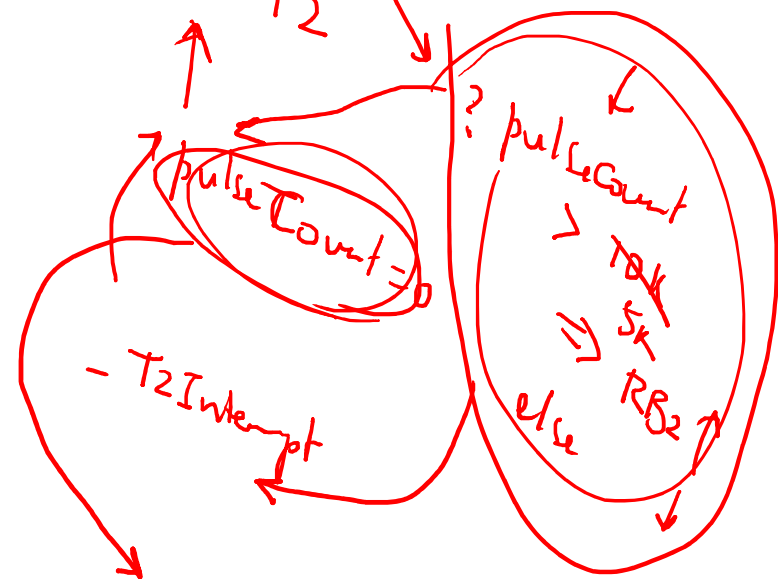


PR1 = 0

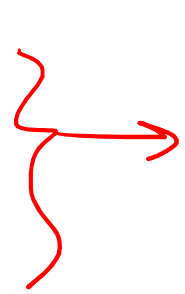
PR1 = 1

pulseCount



- T1 Interrupt
 T1IF = 0
 ++ pulses T1

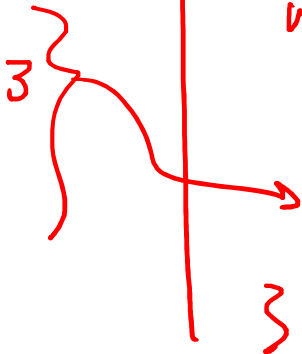
- T2 Int
 T2IF = 0
 if pulses T1 > 3
 RB2 = 1
 else
 → pulses T1 = 0



main
 Setup
 while (1) {
 while (T1IF == 0);
 T1IF = 0
 ++ pulses T1 ; } ++ L

H + 0 + C addc
 23 FFFF
 0000 0000 = 65536

while (1) {
 while T2IF == 0 ;
 O



- T2 Int

```
while (1) {  
    while (T1IF == 0);  
    T1IF = 0  
    ++p  
    → while (T2IF == 0);  
    T2IF = 0  
    if p > 3  
    }  
    pulse = 0
```

```
while (1) {  
    → while (T1IF == 0) && (T2IF == 0);  
    {  
        if (T1IF == 1) {  
            T1IF = 0  
            ++  
        }  
        if (T2IF == 1) {  
            T2IF = 0  
            if p > 3  
            }  
            p = 0  
        }  
    }
```

~~TI Interrupt~~

Setup

~~TI = 1~~