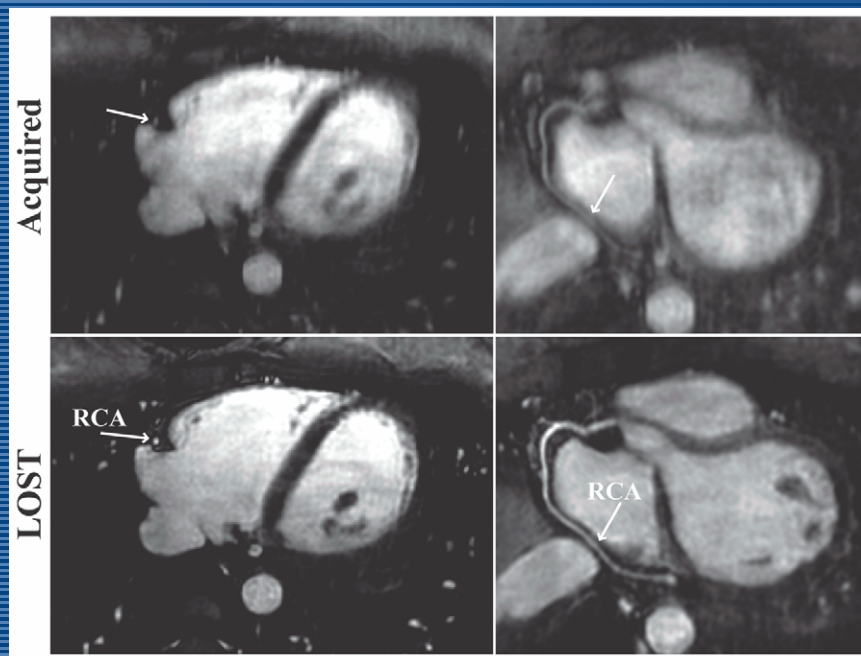


MRM

Magnetic Resonance in Medicine

AN OFFICIAL JOURNAL OF THE INTERNATIONAL SOCIETY FOR MAGNETIC RESONANCE IN MEDICINE



An example axial slice (left) and reformatted axial image (right) depicting the right coronary artery (RCA) of a subject using zero filling (acquired) and low-dimensional-structure self-learning and thresholding (LOST) reconstruction. The LOST reconstruction allows better definitions (image score 3.7 ± 0.7 vs. 1.5 ± 0.5) of the RCA in the proximal, mid, and distal regions from the article by Akçakaya et al (pp 1434-1443).